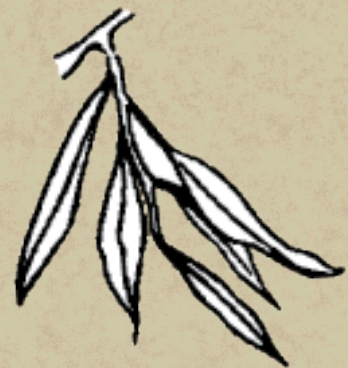


Know Your Plants

Use the photos on the other side of this map to identify plants. When you find one, write the name below the matching leaf shape and color it in!



Natural Resources



Acorns (*las bellotas*) produced by the coast live oak were a primary food source of many native groups who ground them up to use as flour. Today, acorns, ancient grains, and nuts are used in bread and cakes (*pan y tartas*) as a healthy substitute for processed flour (*harina*).



Wood (*la madera*) used for fuel (*el combustible*) and buildings was in high demand during the California Gold Rush. As a result, lumber-producing trees became scarce, so settlers replaced them with eucalyptus trees. This created new problems, since eucalyptus trees are highly flammable and vulnerable to longhorn bark beetles. Look for signs of infestation in eucalyptus trees during your walk!

Plant Uses



The Tongva people made tea (*el te*) from the Toyon plant which was used to wash infected wounds (*herida*) and ingested to ease stomach pains.



Jimson weed has a beautiful flower that will bloom at night (*noche*) and closes again in the early morning (*mañana*). It was used by Indigenous peoples in ceremonies and rites of passage.

To learn more about the Armory, visit armoryarts.org or connect with us @armoryarts



Armory Center for the Arts Presents
Children Investigate the Environment

LOWER ARROYO PARK



Armory Center for the Arts gratefully recognizes the funders of its Children Investigate the Environment Program: Pasadena Water & Power, Sahm Family Foundation, and Dwight Stuart Youth Fund.



Scavenger Hunt

Explore the Lower Arroyo Seco and find each of the listed plants. Draw a line from the plant to the place on the map where you found it!

White Sage



Mulefat



Coast Live Oak



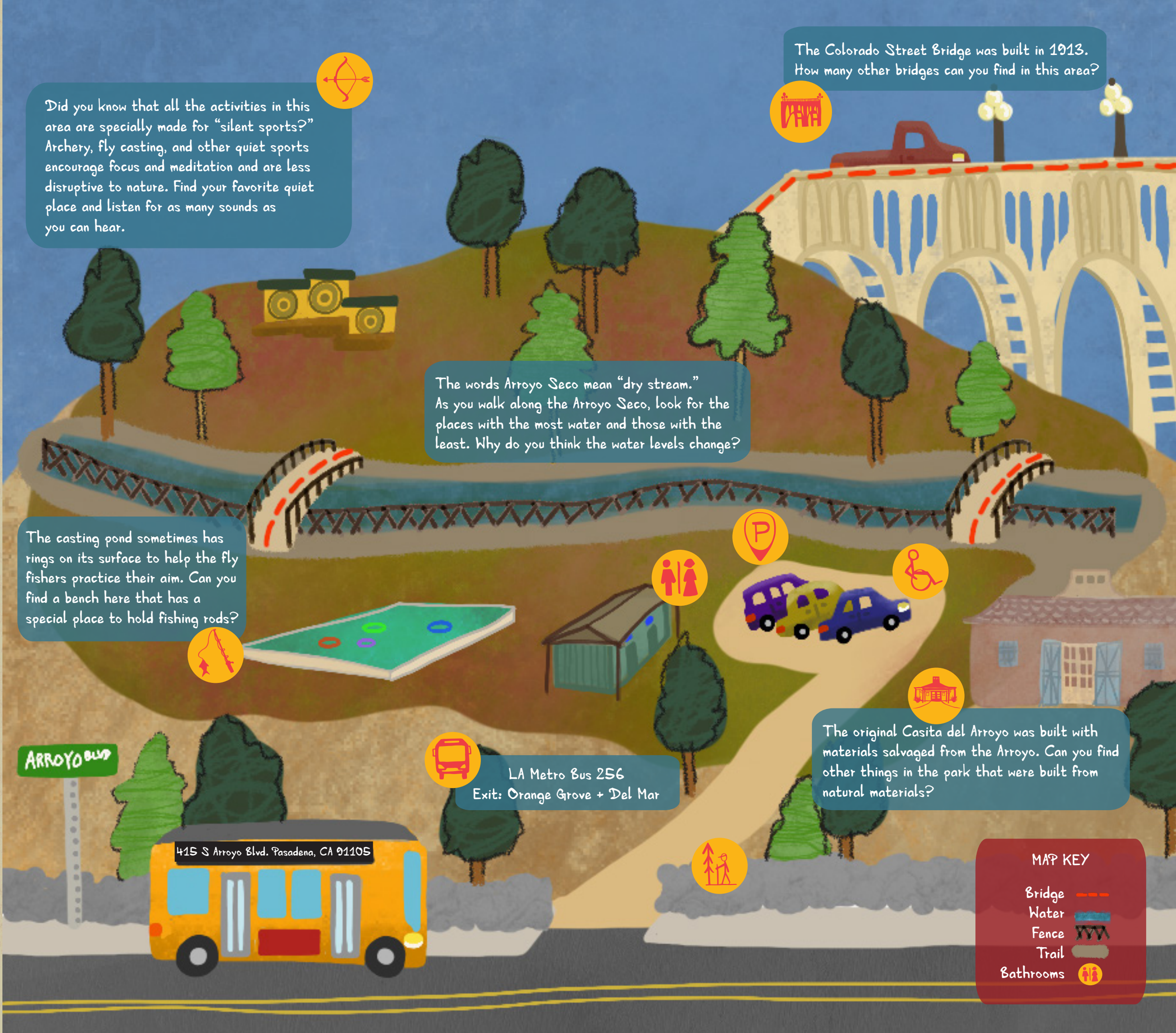
Jimson Weed



Toyon



Eucalyptus



Did you know that all the activities in this area are specially made for "silent sports?" Archery, fly casting, and other quiet sports encourage focus and meditation and are less disruptive to nature. Find your favorite quiet place and listen for as many sounds as you can hear.



The Colorado Street Bridge was built in 1913. How many other bridges can you find in this area?

The words Arroyo Seco mean "dry stream." As you walk along the Arroyo Seco, look for the places with the most water and those with the least. Why do you think the water levels change?

The casting pond sometimes has rings on its surface to help the fly fishers practice their aim. Can you find a bench here that has a special place to hold fishing rods?



The original Casita del Arroyo was built with materials salvaged from the Arroyo. Can you find other things in the park that were built from natural materials?



LA Metro Bus 256
Exit: Orange Grove + Del Mar



MAP KEY

- Bridge
- Water
- Fence
- Trail
- Bathrooms

ARROYO BLVD

